

Integration Framework

Version 1.22.0, SAP Business One 9.1 PL08

Annemarie Kiefer

08, 2015

Public

Agenda

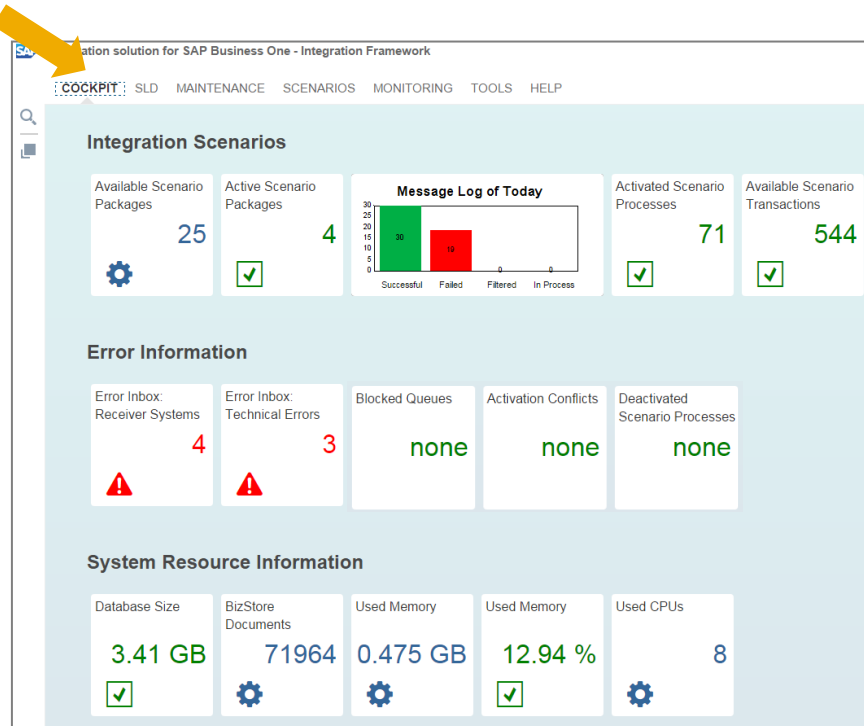
- Cockpits
- Performance: Step instances in processing and outbound
- Certificate tool
- Call Scenario Step Atom
- Configuration options for process control
- Further functions
 - Usability: New HTTP outbound channel
 - Performance improvement option for message log
 - User roles for integration framework and control center



Cockpits

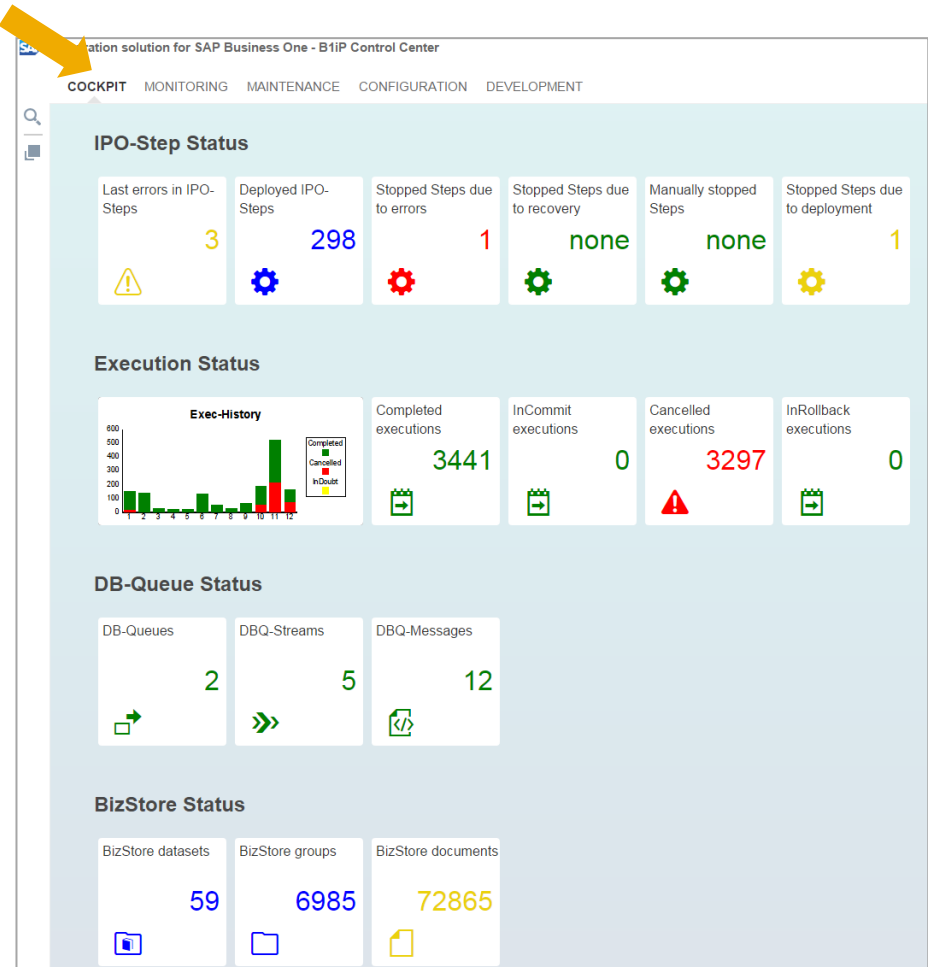
Cockpits

Integration Framework:



To display details and zoom in,
click tile...

Control Center:





Step Instances in Processing and Outbound

Performance: Additional Parallel Processing Option

What for?

Additional parallel processing in **processing** and **outbound**

- For example: Initial load of messages of one B1 object type to one or several receiver systems
- For example: Daily new price list
- Use the option, when in - order processing is not required
- Available for all inbound types

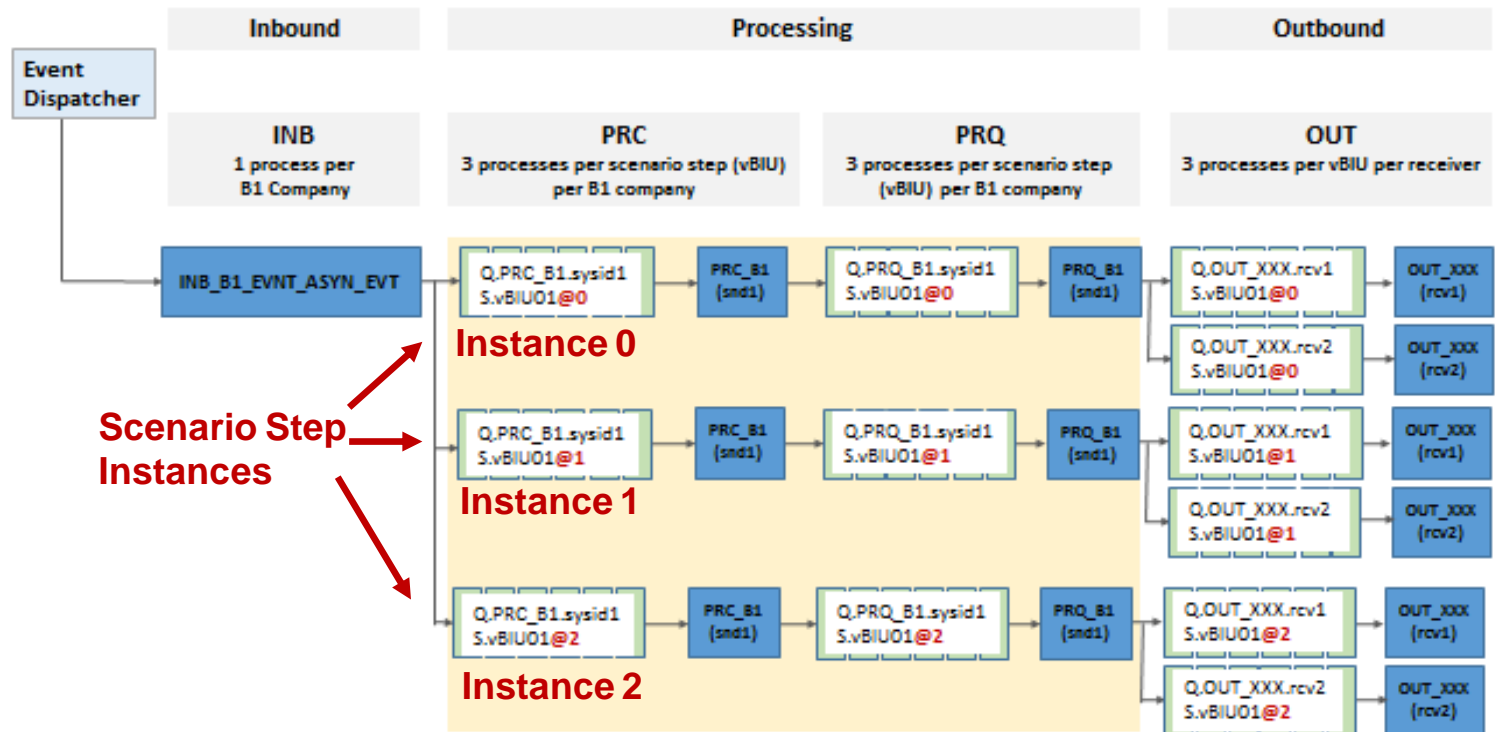
Performance: Additional Parallel Processing Option

Default Parallel Processing

All step and, more specifically, steps with different sender and receiver system combinations run in parallel

Additional Parallel Processing: In processing and outbound

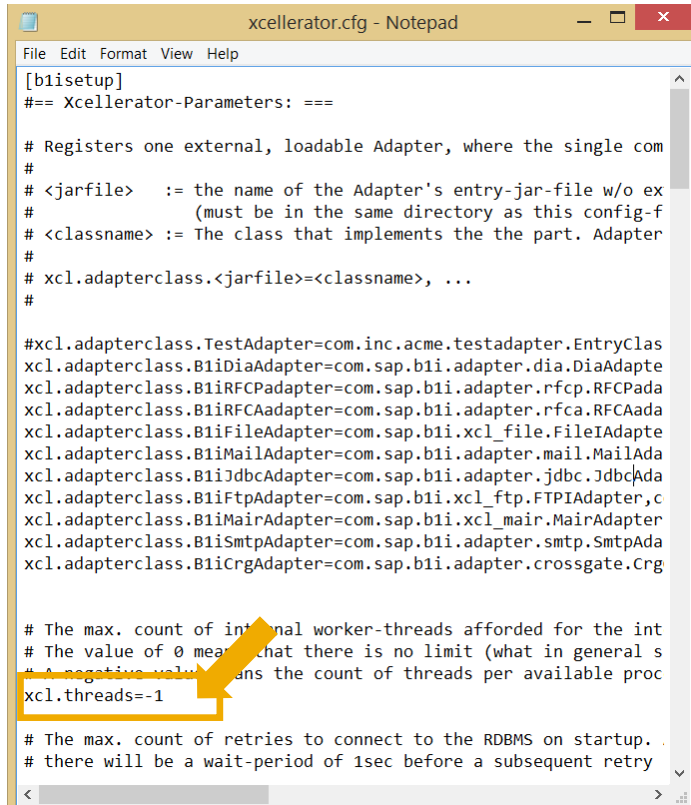
SAP Business One (B1) Inbound with 3 Step Instances and 2 Receiver Systems



Additional Parallel Processing

Prerequisites: Provide consistent settings

Number of threads per processor
in xcellerator.cfg



A screenshot of a Notepad window titled 'xcellerator.cfg - Notepad'. The window shows a configuration file with various settings. A yellow box highlights the line 'xcl.threads=-1' at the bottom of the file. A yellow arrow points to this box. The configuration includes sections for 'b1isetup' and 'xcl.adapterclass' with various adapter definitions.

```
[b1isetup]
=== Xcellerator-Parameters: ===

# Registers one external, loadable Adapter, where the single com
#
# <jarfile> := the name of the Adapter's entry-jar-file w/o ex
#           (must be in the same directory as this config-f
# <classname> := The class that implements the the part. Adapter
#
# xcl.adapterclass.<jarfile>=<classname>, ...
#

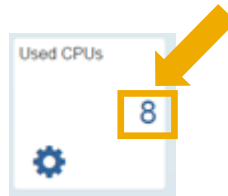
#xcl.adapterclass.TestAdapter=com.inc.acme.testadapter.EntryClas
xcl.adapterclass.B1iDiaAdapter=com.sap.b1i.adapter.dia.DiaAdapte
xcl.adapterclass.B1iRFCAdapter=com.sap.b1i.adapter.rfcp.RFCPada
xcl.adapterclass.B1iRFCAdapter=com.sap.b1i.adapter.rfca.RFCAada
xcl.adapterclass.B1iFileAdapter=com.sap.b1i.xcl_file.FileIApate
xcl.adapterclass.B1iMailAdapter=com.sap.b1i.adapter.mail.MailAda
xcl.adapterclass.B1iJdbcAdapter=com.sap.b1i.adapter.jdbc.JdbcAda
xcl.adapterclass.B1iFtpAdapter=com.sap.b1i.xcl_ftp.FTPAdapter,c
xcl.adapterclass.B1iMairAdapter=com.sap.b1i.xcl_mair.MairAdapter
xcl.adapterclass.B1iSmtAdapter=com.sap.b1i.adapter.smtp.SmtAda
xcl.adapterclass.B1iCrgAdapter=com.sap.b1i.adapter.crossgate.Crg

# The max. count of internal worker-threads afforded for the int
# The value of 0 means that there is no limit (what in general s
# A negative value means the count of threads per available proc
xcl.threads=-1

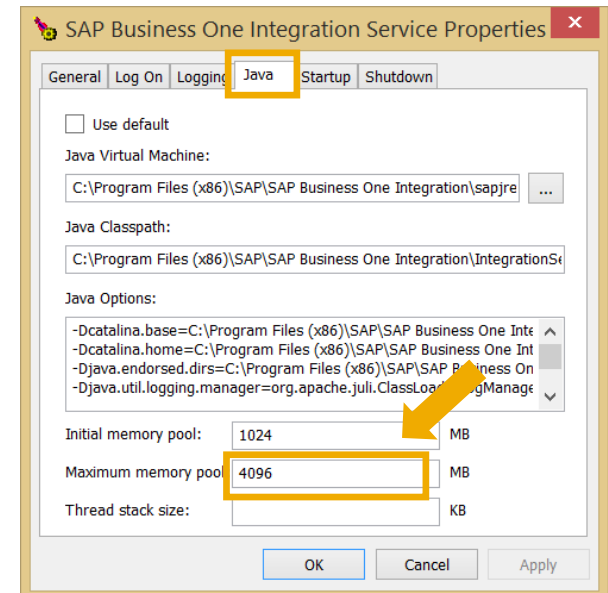
# The max. count of retries to connect to the RDBMS on startup.
# there will be a wait-period of 1sec before a subsequent retry
```

Default: -1

Check number
of processors in
cockpit:



Allocating memory to integration
framework



Default: 2048 MB

...\Tomcat\bin

...\Tomcat\webapps\B1iXcellerator

Additional Parallel Processing

Design and Configuration

At Design Time

Steps enabled for parallel processing

- Disable, when in-order processing is required
- Disable, when step locks one resource

Scenario Step Design

Scenario Package Filter	sap.DATEV-HR
Scenario Step Identifier	sap.XLS2B1JmalVoucher
Scenario Package Identifier	sap.DATEV-HR
Inbound	FI(EXST,ASYN) - Handover - dynamic
Processing	8 processing steps
Outbound	VOID (void)
Version	
Internal	<input type="checkbox"/>
MsgLog Exclusion	<input type="checkbox"/>
Allow Parallel Processing	<input checked="" type="checkbox"/>
B1ISN88 Compatibility Mode	<input type="checkbox"/>
SAP Business One DI Single Transaction	<input type="checkbox"/>
Actions	

At Runtime

Enter number of instances

To exclude steps from parallel processing, click [Filter] and select steps, for example, to simplify debugging

Configuration Runtime

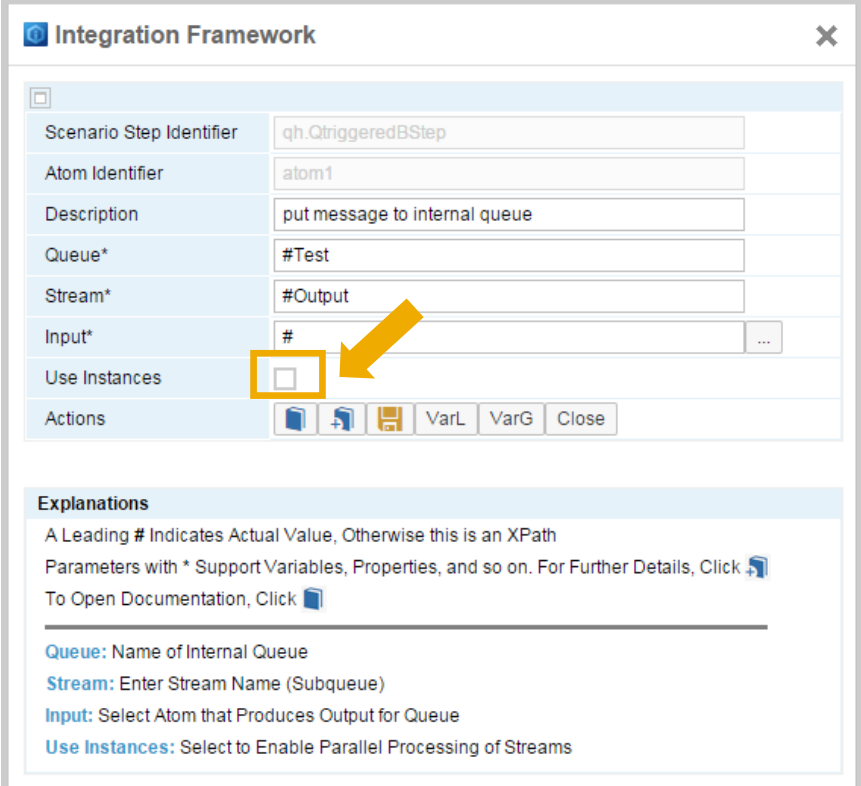
Integration Framework HTTP Port	8080
Integration Framework HTTPS Port	8443
Integration Framework Server	localhost
Temporary Path	C:\Program Files (x86)\SAP\SAP Business One Integrat
Synchronization Mode	No Regulation
Number of Step Instances	4
Actions	

Filter

Performance: Additional Parallel Processing Option

Put to internal queue atom

Option to let *Put to internal queue* atom take part in parallel processing



Integration Framework	
Scenario Step Identifier	qh.QtriggeredBStep
Atom Identifier	atom1
Description	put message to internal queue
Queue*	#Test
Stream*	#Output
Input*	#
Use Instances	<input type="checkbox"/>
Actions	VarL VarG Close

Explanations

A Leading # Indicates Actual Value, Otherwise this is an XPath
Parameters with * Support Variables, Properties, and so on. For Further Details, Click [?](#)
To Open Documentation, Click [?](#)

Queue: Name of Internal Queue
Stream: Enter Stream Name (Subqueue)
Input: Select Atom that Produces Output for Queue
Use Instances: Select to Enable Parallel Processing of Streams

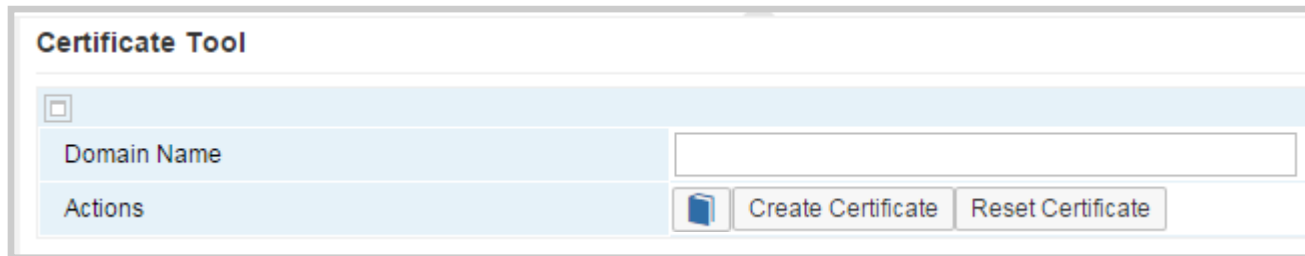


Certificate Tool


Certificate Tool

- Creates root certificate
- Creates self-signed server certificate
- Deploys server certificate to integration framework keystore
- Creates certificate for the mobile device, based on server certificate
- Replaces manual steps provided in SAP Note [2019275](#)

Tools → Certificate Tool



The screenshot shows the 'Certificate Tool' interface. It has a title bar 'Certificate Tool' and a small square icon in the top left. Below the icon is a light blue header bar. Underneath, there is a table with two rows. The first row has a label 'Domain Name' and a text input field. The second row has a label 'Actions' and two buttons: 'Create Certificate' and 'Reset Certificate'. The 'Create Certificate' button has a small blue icon to its left.

Certificate Tool	
<input type="checkbox"/>	
Domain Name	<input type="text"/>
Actions	 <button>Create Certificate</button> <button>Reset Certificate</button>

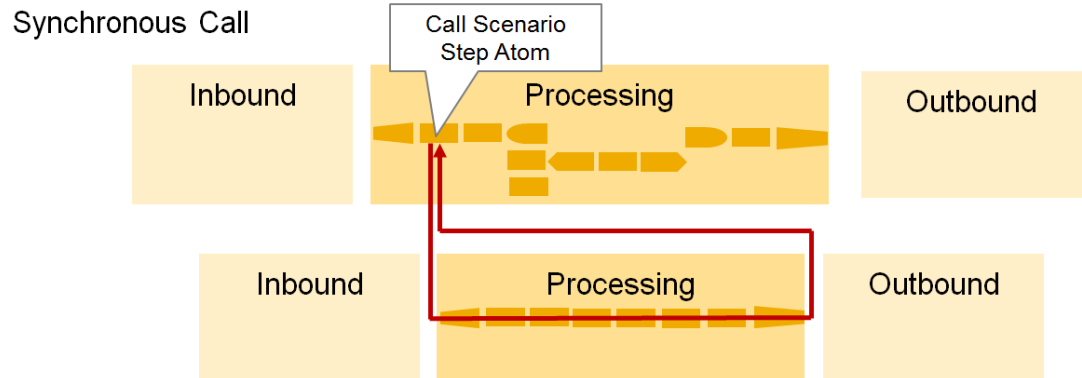


New Atom: Call Scenario Step

New Atom: Call Scenario Step

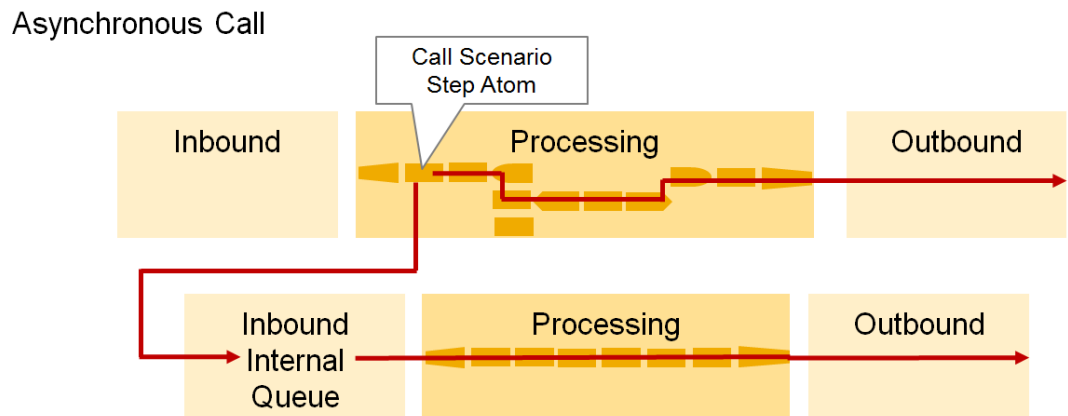
Synchronous Call

- Runs processing phase of step and returns result to atom
- Inbound and outbound not relevant



Asynchronous Call

- Step must have `internal queue inbound type`
- Atom hands over message to internal queue
- Both steps continue processing



New Atom: Call Scenario Step

Use Case

- Replaces *Put to internal queue* and *Include B1iP BizFlow* atoms that are atoms on B1iP level
- Atom automatically considers scenario step instance concept (for asynchronous calls)
- Well-formed message available in scenario step atom outbound (for synchronous calls)



Configuration Options for Process Control

Configuration Options for Process Control I

Process Control:

- Provides overview of processes in integration framework
- Provides many options for detailed analysis

Process Control

Clear INCOMMIT Transactions

Scenario Processes - Inbound

Scenario Processes - Processing

Scenario Processes - Outbound

											Activate	Deactivate	Debug On	Debug Off
✓	0	0	0	0	0	0010000106	qh.B1TestXPTFile	Outbound File	Debug	ErrHdlg	✓	Active	✓	Exception
✓	0	0	0	0	0	001sap0002	sap.B12FileEmpDatTrans	Outbound File	Debug	ErrHdlg	✓	Active	✓	Exception
✓	0	0	0	30	0	001abc0002	qh.httpoutbound	Outbound HTTP	Debug	ErrHdlg	✓	Active	✓	Exception
✓	0	0	0	0	0	0010000104	qh.B1testR3in	Outbound SAP Business One	Debug	ErrHdlg	✓	Active	✓	Exception
✓	0	0	0	0	0	Internal	sap.MobileCacheRefresh	Outbound Void	Debug	ErrHdlg	✓	Active	✓	Exception
✓	0	0	0	0	0	Internal	sap.MobileCacheRefreshW	Outbound Void	Debug	ErrHdlg	✓	Active	✓	Exception
✓	0	0	0	0	0	Internal	sap.Succ2B1EmpDatTrans	Outbound Void	Debug	ErrHdlg	✓	Active	✓	Exception
✓	0	0	0	0	0	Internal	sap.XcelCacheRefresh	Outbound Void	Debug	ErrHdlg	✓	Active	✓	Exception
✓	0	0	0	0	0	Internal	sap.XcelCacheRefreshW	Outbound Void	Debug	ErrHdlg	✓	Active	✓	Exception
✓	0	0	0	0	0	Internal	sap.XcelDeploy	Outbound Void	Debug	ErrHdlg	✓	Active	✓	Exception
✓	0	0	0	0	0	Internal	sap.XLS2B1JrnlVoucher	Outbound Void	Debug	ErrHdlg	✓	Active	✓	Exception
✓	0	0	0	0	0	Internal	sap.XML2B1JrnlVoucher	Outbound Void	Debug	ErrHdlg	✓	Active	✓	Exception

Framework Processes

Offline Client Processes

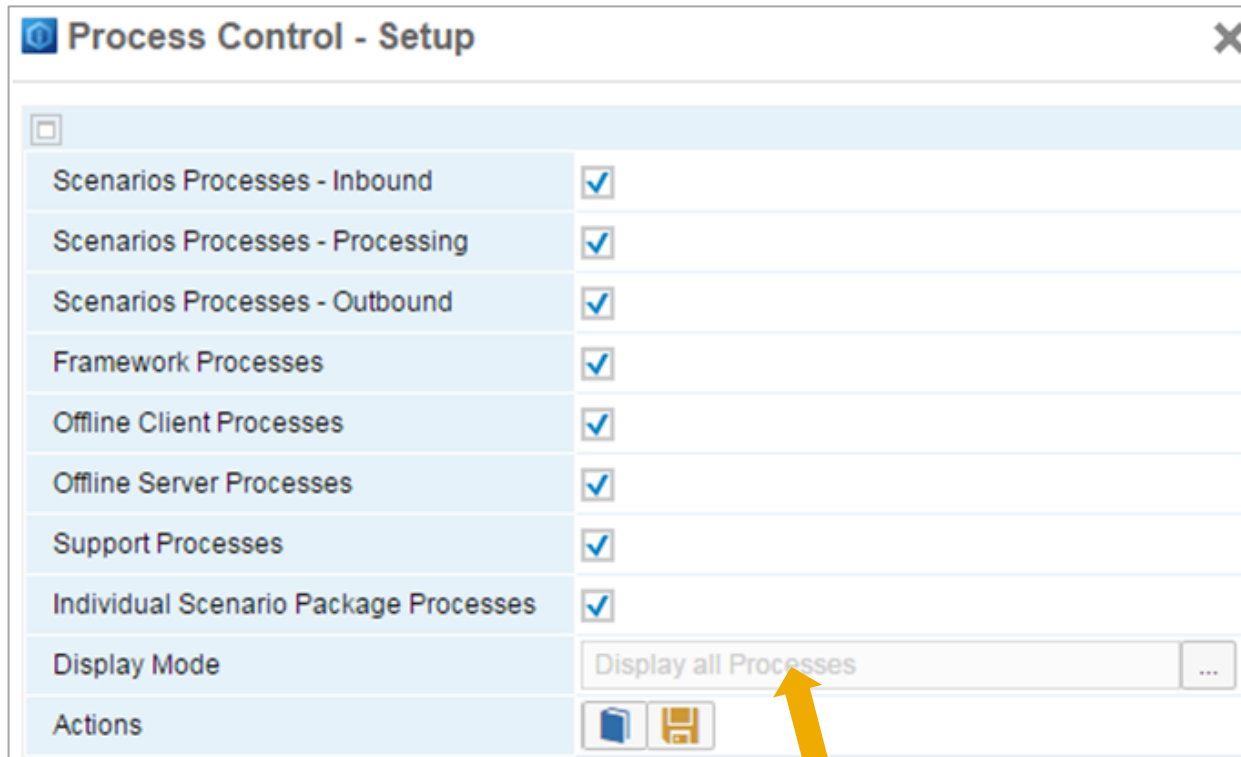
Offline Server Processes

Support Processes



SAP B1 Intercompany

Configuration Options for Process Control II

Process Control Configuration:



Process Control - Setup

<input type="checkbox"/>	
Scenarios Processes - Inbound	<input checked="" type="checkbox"/>
Scenarios Processes - Processing	<input checked="" type="checkbox"/>
Scenarios Processes - Outbound	<input checked="" type="checkbox"/>
Framework Processes	<input checked="" type="checkbox"/>
Offline Client Processes	<input checked="" type="checkbox"/>
Offline Server Processes	<input checked="" type="checkbox"/>
Support Processes	<input checked="" type="checkbox"/>
Individual Scenario Package Processes	<input checked="" type="checkbox"/>
Display Mode	Display all Processes ...
Actions	 

Display processes with transactions



Further Functions

Further Functions

- New HTTP Outbound Channel (Asynchronous HTTP)
Just hand over message; easier setup, easier for multiple receivers, message log displays receivers
- Performance improvement option for message log

Message Log Handling	
<input type="checkbox"/>	
Message Log	<input type="checkbox"/>
Enforce Message Log for Simplified Calls	<input type="checkbox"/>
Final Message Log Only	<input checked="" type="checkbox"/>
Daily Deletion	<input checked="" type="checkbox"/>
Indexed Access	<input checked="" type="checkbox"/>
Block Size	20
Default View	Grouped ...
User Interface Refresh Timeout	1000
Log Level	InfoSet ...
Actions	Manual Deletion Daily Deletion Filter

Integration framework updates initial message log entries during message processing

- Selecting the option, integration framework only creates final message log
- No update for log entries during processing
- Has impact on integration framework performance
- If enabled, you cannot display messages with `Processing` status in message log

SAP Note [2192737](#)

User Roles

Administrator

Technical configuration, administration and content development, provides access to functions provided by default B1iadmin user, allows access to all integration framework functions.

Developer

Can design and set up integration content, has access to monitoring and development-related functions.

Configurator

Can perform technical configuration and configuration of integration content, has access to monitoring.

Supervisor

Can perform monitoring, value mapping, resend messages, and test connection.

User Roles

COCKPIT SLD MAINTENANCE SCENARIOS MONITORING TOOLS HELP

Maintenance

- System Info
- ZIP Import
- Cfg Dev Env.
- Cfg Runtime
- Cfg Connectivity
- Cfg SAP II
- Cfg Metadata
- Cfg B1 Cloud
- Cfg B1 Event Filter
- Cfg B1 Event Subscriber
- Cfg MsgLog
- Cfg Error Handling
- Cfg Audit Control
- Daily Actions
- B1 Offline Client
- User Administration

User Administration

Admin

Runtime

Session

Actions

Explains

[Admin]

[Runtime]

[Session]

[Auth. Events]

B1iP User Administration - users_bfd.xml

B1iP User Administration

User Table	users_bfd.xml
last changed	2015-06-24_22:12:16
Initiator	[.....]B1iP_BizProcessor
minimal password length	
count of days until password expires	
maximum count of allowed subsequent logon failures	

Add User

Change Policies

User

Name	AnneTest
Language	en
active	true
Password expires	2015-09-25_13:02:09

Role

Name

Supervisor

Action

Describe

Remove

Toggle Activation

Reset Password

Add Role

Delete

User

Name	AnneTest2
Language	en
active	true
Password expires	2015-09-25_13:13:41

Role

Name

© 2015 SAP SE or an SAP affiliate company. All rights reserved.

Public

22



Availability

Availability

Integration framework version 1.22.0, available with:

- SAP Business One 9.1 PL08 (also for version for SAP HANA)



Thank you

Contact information:

Annemarie Kiefer
annemarie.kiefer@sap.com



Divider page